



An easy walk through the Ngāhere leads to *Te Puna o Riuwaka*, visited by the Trustees at a recent hīkoi to some of the Ngāti Rārua Sites of Significance. (See more pics inside.)

Inside

Chair's Foreword

Assisted travel for upcoming AGM

Marokopa Roadshow

Motueka High School Cultural Centre opens

Te Āwhina Marae Degustation dinner and art auction

Te Ara Mahana

Grovetown Lagoon Restoration project

Awaroa Beach celebrations

Upcoming

- Fri 16 Sept: Next full Board hui
- Sat 17 Sept: Rūnanga Roadshow at Marokopa Marae
- Sat 12 Nov: 2016 AGM, Wairau

The Taonga of our Rohe

On Saturday 25 June 2016 the Board of Trustees took time out to visit some of the sites of significance in the Ngāti Rārua rohe.

The first site the Trustees visited was in Pearse Valley, which is part of the Motueka Valley, within the rohe of Pokororo. Today the site is a forest covered in *Pinus Radiata* (Pine) grown for commercial exports, however there is a pocket of native Beech trees growing on the site.

The next site was *Te Puna o Riuwaka*, more commonly known today as the Riwaka Resurgence, the source of the Riwaka river, which sits at the foot of the Tākaka hill. The source of the Riwaka river is an underground spring with a complex cave system that has been carved out by water over millions of years. Thousands of people every year take the beautiful easy walk through the

Ngāhere which follows the awa to the source.

The Trustees also visited three Pā sites. *Otuwhero Pā* in Marahau, which is now a forest covered in *Pinus Radiata* (Pine) grown for commercial exports; *Kākā Pā*, today more commonly known as Kaka Point, commands stunning 360 degree views overlooking Kaiteriteri; and *Puketāwai* was the last Pā site visited, which once had a hidden cave from the awa where the tangata whenua hid their waka from sight of attackers. Unfortunately the road was pushed through the middle of the cave pre Resource Management Act, destroying it.

Visiting the Pā sites, you couldn't help but get a sense of how strategic tangata whenua were with the positioning of the Pā's and the vibrancy of life that would have existed there. It is a magnificent experience.

Continued page 3.

Chair's Foreword

Tēnā koutou te whānau whānui o Ngāti Rārua, nga mihi ki a koutou ki runga i te wa o Koanga.

Farewelling previous GM and Director, and Trustees

Our Trust Board has been working hard and have seen a couple of changes as of late. At our June meeting Trustees Lorraine Eade and Arthur Phillips resigned. We acknowledged them and their service to Ngāti Rārua at a dinner where we also paid tribute to Bruce Lock who has held a number of roles for Ngāti Rārua over 30 plus years, inclusive of General Manager and Director of a number of our subsidiaries. Bruce has chosen to downscale his work commitments to spend more time with his wife and whānau. We wish Bruce, Lorraine and Arthur all the very best.

Welcoming new Trustees

Due to needing eight Trustees to make any major decisions as per our Trust Deeds, we have appointed two Co-opted Trustees for a period of a year, with the positions up for election in 2017. This has enabled us to keep some momentum going in the next 17 months. We undertook a shortlisting process relative to our needs and are pleased to welcome **Miriana Stephens** and **Natasha Willison-Reardon** to the Board. We will provide more information on Miriana and Natasha in our next pānui.

Koha for Tangihanga

At our last Board meeting we discussed the contribution that Ngāti Rārua gives upon the passing of one of our members. It has been \$100 for a number of years, but the Trustees felt this was no longer an appropriate amount since the Iwi has settled. Therefore, the Rūnanga has confirmed a new amount of \$250.

Chair's Foreword (cont.)

Risk

Risk is a major consideration for all governance Boards in this day and age. To that end, we have received the guidance of a consultant to ensure that our assessment and management of risk is appropriate for the size and nature of our business.

National Iwi Chairs Forum in Hopuhopu

I was privileged to attend the most recent National Iwi Chairs hui in Hopuhopu last month which was hosted by Waikato-Tainui. One of the key topics discussed was the burial of tūpāpaku at sea and agreement that this should cease until the approval of tangata whenua is gained. Another topic discussed was that future resource management tools should not undermine the effectiveness of Mana Whakahono (a mechanism that enables iwi to work collaboratively with councils to manage local resource management issues and inform processes).

During the three-day hui, the Children's Covenant was agreed. This is a covenant for the nation's children that commits to allow our children to thrive and stand strong. This was signed by Iwi Chairs on behalf of their Iwi, including myself on behalf of Ngāti Rārua.

Data is a tradable commodity and there is a need for iwi to have more control on information applicable to iwi/Māori. An Iwi Leaders Group has been set up to spearhead the relational relationship required with the Crown to advance this.

Kermadec Ocean Sanctuary was also discussed and it was agreed that the iwi will support it so long as it doesn't extinguish Māori rights as guaranteed in the 1992 Treaty of Waitangi Fisheries settlement.

I was lucky enough to have one of our Rangatahi join me – nga mihinui ki a koe Megan Hancock!

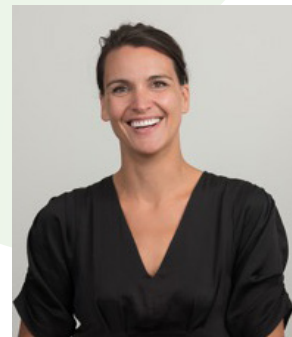
More information can be found on www.iwichairs.maori.nz.

AGM – Travel Contribution

Our AGM is set for 12 November 2016 in Wairau, Blenheim. This year we will be offering a travelling contribution to our whānau that choose to travel to the AGM. We encourage you to share travel amongst whānau to spread the contribution further. For those that live in the North Island, we will be giving \$120 per registered adult to those arranging their own travel to the AGM. There will also be a bus departing from Hamilton. We will be putting on a van for our Motueka / Nelson whānau or giving \$50 for each registered adult member making their own way from there, and \$80 for each registered adult member that lives in the South Island but not within Te Tau Ihu o te Waka a Maui that wishes to attend.

Wishing you all the very best, I look forward to seeing you at a hui soon.

Please feel free to contact me to discuss any matters contained within this pānui.



Nāku noa, nā

Olivia Hall
Chair

Te Rūnanga o Ngāti Rārua

**Register
TODAY**

TO REGISTER OR UPDATE YOUR CONTACT DETAILS, CONTACT US:

PO Box 1026, Blenheim 7240

Tel: (03) 577 8468

admin@ngatirua.co.nz

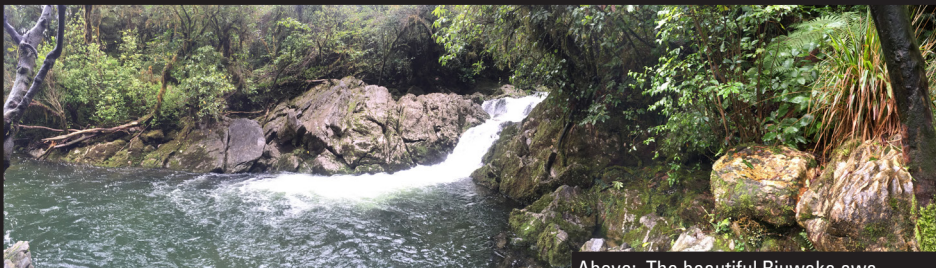
Tokomaru House, 15 Kinross Street, Blenheim 7201

www.ngatirua.co.nz

The Taonga of our Rohe (continued from page 1.)



Top left: TRONR Board of Trustees, pictured with Win Greenaway, Mahi Ohaoha Development Manager, at Pearse Valley Forest block, owned by Ngāti Rārua.
Top right: Entrance way to the Ngāhere. Below right: Chair Olivia Hall and Deputy Chair Andrew (Anaru) Luke at Te Puna o Riuwaka.
Below middle & left: TRONR Trustees in the Ngāhere.



Above: The beautiful Riuwaka awa.
Far left: Marahau. Below: Puketāwai Pā site



Above: Kākā Pā site
Far left: Puketāwai Reserve DoC signage

Upcoming AGM

This year the Annual General Meeting (AGM) will be held on Saturday 12 November, in the Wairau. It has been three years since the Trust supported attendance to the AGM, and we think a wide attendance every three years allows you to consider the strategic performance of the Rūnanga.

For this reason, we invite members who would be interested in attending if support was available, to register your interest with the office.

Contact us at either:

email: admin@ngatirarua.co.nz;
Phone: (03) 577 8468

2016 Annual Report

This year the Board has decided to streamline the distribution of the 2016 Annual Report.

Accordingly, from Friday 14 October 2016, the Financial Statements will be available on request, and can be distributed by email (pdf format) or in hardcopy, or both. Copies of the Annual Report will also be available at the AGM on 12 November.

If you would like a copy sent to you, please contact us at either:

email: admin@ngatirarua.co.nz;
Phone: (03) 577 8468

Marokopa Roadshow

In June the Rūnanga undertook a roadshow at Te Āwhina Marae in Motueka to discuss the strategy and movement forward for whānau input.

We are looking forward to spending time with our Marokopa whānau and doing the same with them. The date for this is 17 September 2016 at Marokopa Marae. More info can be found on our Facebook page.

Motueka High School Cultural Centre

Motueka High School opened their new \$1.2 million cultural centre with a dawn blessing and pōwhiri on 5 August. The new culture centre is called Te Whare Taikura o Te Maatu and it will be a gathering place for the school's youth, a place to welcome visitors and a place to focus on developing kaupapa Māori within the school.

Ngāti Rārua is working with Te Ātiawa to generate the carvings that will adorn this fantastic whare sometime in the near future.

Te Āwhina Marae Degustation Dinner




Once again the whānau of Te Āwhina Marae turned on a spectacular evening to raise funds with a degustation dinner and art auction. During the event we purchased two artworks in support of the event and to adorn our Ngāti Rārua offices which have remained bare since they were built in 2013.


The first artwork is a beautiful photograph of the magnificent Te Puna o Ruiwaka, taken by Naomi Aporo (pictured above).


The second is a carved koruru by Ngāti Rārua tohunga whakairo James Rickard, who teaches out of Te Wānanga o Whakairo Rākau o Aotearoa. A big mihi to the whānau of Te Āwhina for the funds raised for our beautiful Marae.


Keep in touch...

 www.ngatirarua.co.nz

 facebook.com/ngatirarua

 (03) 577 8468

 panui@ngatirarua.co.nz

 PO Box 1026, Blenheim 7240

News from Te Hauora o Ngāti Rārua Ltd

Te Ara Mahana Programme

Kia ora koutou,

We've had a busy time presenting Te Ara Mahana programme within the Wairau rohe, with plenty of learning along the way. It was a pleasure presenting to Te Ātiawa in May, with Ngāti Apa ki te Rā Tō and Rangitāne o Wairau being supportive of the programme as well.

The sessions generated interesting discussions which enabled the group to challenge and change some of their own discriminatory behaviour. Mental distress is very isolating, if a person is empowered to start talking about a small problem, that small problem is stopped from becoming a big problem; it's stopped from becoming depression and it's stopped from becoming a suicidal thought.

Certain stressors can contribute to mental distress – here are a few:

- Bullying
- Physical illness
- Genetics
- Substance Abuse / Any kind of abuse
- Poor nutrition
- Death or divorce

Do you have the courage to reach out and connect to a person who is experiencing mental distress?

Do you have a story to share? We would love to hear from you!

panui@ngatirarua.co.nz

TIP:

Sit, Ask, and Listen.

TITIRO, WHAKARONGO;
ĀWHINATIA, MANAAKITIA,
KŌREROTAHITIA;
MAHITAHITIA; TIAKI KOE
I A KOE ANŌ; KEI A KOE
TONU TE RONGOĀ

If you know of someone who has experienced discrimination because of mental distress and you would like us to talk to a group or you would like to learn more, please contact Larna or Marion at:

Te Hauora o Ngāti Rārua Ltd
Phone: (03) 577 8404

Ngā mihi,

Larna Macdonald



Are you Registered with NRAIT but not TRONR?

Did you know that registering yourself and/or your whānau with NRAIT does not automatically register you with Te Rūnanga o Ngāti Rārua (TRONR) and vice versa?

We often receive calls from members of NRAIT, calling to update their details. On searching the TRONR Iwi Register, the member and/or their whānau will not be registered with TRONR. What has happened is that the caller will have registered with NRAIT, but not TRONR. It is confusing, but because we are two separate entities – us being the mandated iwi body and them

a Trust that has specific rights and responsibilities in relation to the descendants of the original owners of Motueka – we are unable to share our members' information which is confidential under the Privacy Act.

Both our registrations are based on very similar tupuna list, so if you can be on one, you can probably be on both, so ensure you are registered with both.

If you are unsure about your registration, please call the TRONR office on (03) 577 8468 or email admin@ngatirarua.co.nz.

**Register
TODAY**

TO REGISTER OR UPDATE YOUR CONTACT DETAILS, CONTACT US:

PO Box 1026, Blenheim 7240

Tel: (03) 577 8468

admin@ngatirarua.co.nz

Tokomaru House, 15 Kinross Street, Blenheim 7201

www.ngatirarua.co.nz

Grovetown Lagoon Restoration Project

In June, Te Whānau Hou Grovetown Lagoon launched the 'Bring Back Big Bush' campaign. There was once a large stand of Kahikatea on the Wairau Plains at Grovetown, which was originally called Big Bush. This was a great food source for our tupuna as well as a source of timber that was used to build early

Blenheim.

A number of committed members of the local community are investing their time and resources into this wonderful taonga for future generations of Marlborough whānau to enjoy. More information can be found on www.grovetown.co.nz.



Awaroa Beach Celebrations

After a massive crowdfunding campaign, the Awaroa beach was bought by the public of New Zealand and given to the Department of Conservation to be included in Abel Tasman National Park. Ngāti Rārua has a long connection to this land, and whilst we were unable to contribute to the purchase, we were in regular contact with the campaign organisers.

Awaroa was part of the Waipounamu Purchases and, in April 1856, Chief Land Commissioner Donald McLean instructed Government Surveyor Thomas Brunner to set aside 50 acres at



Photo courtesy of Google Images

'Awarua' to Peni Miti Kakau (a.k.a. Pene Te Poa), a Ngāti Rārua Chief of Motueka and his wife Meri Ngako (a.k.a. Merenako), a Te Ātiawa Chief from Motueka. Despite this, the Reserve was never allocated and the Crown retained ownership, eventually selling to private buyers. The last known Ngāti Rārua to live in the area was Aunty Kate Mason.

Early in July 2016, on a beautiful Winter's day, representatives

of Iwi, local residents, DoC and crowdfunding, gathered at the beach to celebrate its purchase. Our whānau were in attendance to represent Ngāti Rārua, including Pohe Stephens, who was our kaikōrero, Rima Piggott and a number of our wahine, who delivered the karanga, and the youngest Ngāti Rārua attendee, who assisted with the unveiling of the plaque.

Sender: Te Rūnanga o Ngāti Rārua, PO Box 1026, Blenheim 7240

New Zealand
Permit No. 244712

